



The power behind competitiveness

Delta InfraSuite Manager

Data Center Infrastructure Management (DCIM)

Data Center Infrastructure Solutions

www.deltapowersolutions.com



Delta InfraSuite Management System

InfraSuite Manager - Data Center Infrastructure Management (DCIM)

“Due to rapid technology advances, enterprises are demanding centralization of management processes and also a consolidation of infrastructure into a centralized location; limited availability of computing resources, power and space has led to an increasing demand for DCIM (Data Center Infrastructure Management) solutions.”

- Global Data Center Infrastructure Management Market
Technoavio, 2016

The velocity of its growth, coupled with its real and tangible benefits makes understanding DCIM important not just for facility managers, but also for CIOs and IT managers. Delta InfraSuite Manager is the fully featured DCIM software solution to deliver automation and visibility into the data center and increase the ease of management on a comprehensive platform. InfraSuite Manager optimizes the performance and life cycle management of the data center.



Benefits of InfraSuite Manager

Central View from One Platform

InfraSuite Manager provides users a central view to observe all of the critical information for a data center based on a single real-time platform.

Cost Effective

Organizations with corporate operation of cost efficiency initiatives can also look to DCIM to better manage and optimize resource use across their entire infrastructure, as well as help lower their impact on the environment. PUE (Power Usage Effectiveness) is improved and costs are reduced accordingly.

Increased Availability

By viewing critical information in the data center, the availability of the data center has been increased. InfraSuite Manager offers advanced alert algorithms across the infrastructure. It helps the data center mitigate the risk of downtime.

Sustainability Management

Having insight into the future of the data center's day-to-day operations, and understanding how to optimize the data center's resource allocation is invaluable to a business. InfraSuite Manager not only enhances capacity and asset management but also improves overall productivity, which can extend the data center life cycle.

Empower your data center

For Facilities Managers



- Overall layout of your data center
- Overall environment mapping or profile of your data center
- All equipment status
- Chiller plant status and profile
- Power diagrams
- Alarm notification and reporting

For IT Managers



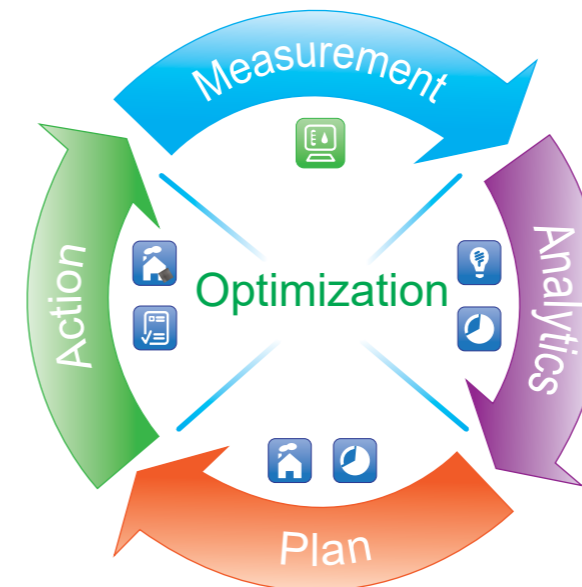
- Access control and surveillance
- Asset management
- Rack utilization, rack U-space, weight, power load and network port for each rack
- Multiple site management
- Alarm notification, reporting and schedule
- IPMI

For Chief Information Officers CIOs



- Real time and historical PUE
- Electricity cost and billing
- Overall capacity utilization
- Work order progress and approval process
- Alarm notification and reporting

Management Philosophy for Data Center Optimization



Measurement

Measure and monitor the overall data center environment in real-time from a central dashboard

Analytics

Create a virtual model of the infrastructure to digitally map the relationships between all these components

Plan

Manage the data center better based on insightful historical information and trend analysis with well-grounded planning

Action

Define actionable solutions and configurations to execute

Product Features



Base Model (Operation)



Energy



Slide Show



Asset



Capacity



Work Order



Asset Inspection



Base Model (Operation Platform)

The base model of the InfraSuite Manager provides real-time critical information for a data center across floors or locations. It also gives recommendations on how to resolve issues, and offers a built-in report generator tool and template that provide device information and trend charts in the reports. The base model is the fundamental monitoring platform and extensional function modules can be added according to the demands of enterprises or organizations. The communication architecture of InfraSuite Manager uses Master/Slave and Browser/Server architecture for the Windows client and web browser user interface.



PUE Energy Module

The Energy Module of the InfraSuite Manager contains the functions of energy measurement, PUE calculation, electricity tariff formula, and historical data analysis. In addition, it includes organizational energy classification and management mechanism. With time and experience operating this system, datacenter managers develop greater agility for managing energy consumption. This module can transform energy consumption data collected from power meters, UPS (Uninterruptible Power Supply), PDU (Power Distribution Unit) and environment detectors into dynamic charts and graphs, including line charts, bar charts, and pie charts based on user preference.



Energy Analysis Module

Energy Analysis is not just for a single site but for the entire organization. The electricity tariff formula can be customized for each department. In terms of detailed energy analysis, Delta offers diverse scenario analyses, including energy usage KPI, comparison, energy combination analysis, abnormal energy usage ranking, and energy usage estimation.



Asset Module

Asset Module offers graphical views of assets in every single rack in the data center. This makes it easy to quickly identify the power path and network topology map. In the case of assets without proper management, it often leads to a higher mean time to repair (MTTR) and lowering the availability of the data center's equipment.



FIGURE 1. Overview of Data Center - Temperature



FIGURE 2. Dashboard of PUE

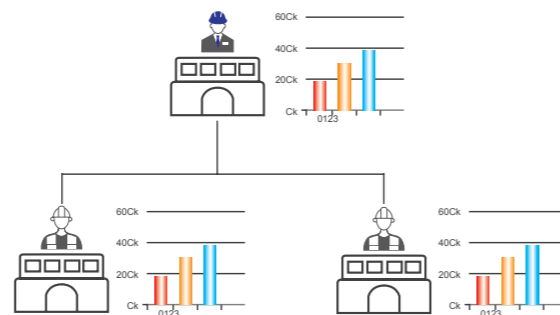


FIGURE 3. The Hierarchy of Energy Analysis



FIGURE 4. Asset Module - Rack Management



Capacity Module

Capacity Module allows data center managers to plan for the future more effectively through the use of detailed data on rack space, weight, network, power and cooling capacity in the data center. For example, Capacity Module helps data center managers evaluate resource consumption, making it easier for them to plan and decide on the future allocation and most suitable installation locations for IT devices.



Work Order Module

The Work Order Module provides a highly customizable platform that enables users to design work order templates for different management purposes. Different variables such as names, types, priority, schedule, roles of tasks can then be set by the administrator. This helps users not only simplify and integrate the process of change management, but also extends the life cycle of data center operation.



Asset Inspection Module

The Asset Inspection Module of the InfraSuite Manager is used with a user-friendly mobile app which makes it smarter and more efficient for the inspector to complete his/her inspection process. Customizable templates can be designed for different types of assets. Users can also upload photos of the inspected assets to InfraSuite Manager. Unique QR codes of each asset can be generated by the system, making the tasks more intuitive.



FIGURE 5. Automatic Availability Calculation

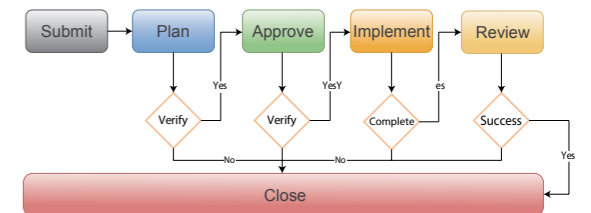


FIGURE 6. The Process of Change Management

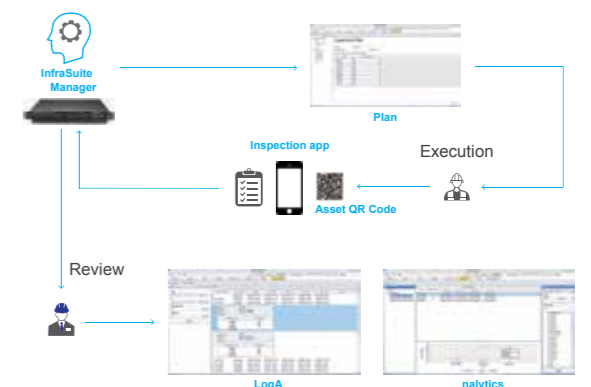


FIGURE 7. The flow of Inspection Execution and Review

System Requirements

	InfraSuite Manager (Server)	InfraSuite Manager (Windows Application UI)	InfraSuite Manager (Web Monitor UI)
Hardware	CPU: > 2GHz Memory: ≥ 8G Free HD Space: 500G mirrored	CPU: > 2GHz Memory: ≥ 4G	CPU: > 2GHz Memory: ≥ 4G
Software	Support OS: Windows 7, 8, 10, Windows Server 2008, 2012, 2016	Support OS: Windows 7, 8, 10, Windows Server 2008, 2012, 2016	Recommended Web Browser: Microsoft Internet Explorer v11, Google Chrome v30, Mozilla Firefox v23 and Safari v5.

Delta InfraSuite Management System

InfraSuite Device Master

InfraSuite Device Master provides a rich set of capabilities that simplify and automate critical device monitoring. It allows users to observe the status of all devices, query event logs or history data, and assists users in taking appropriate action. With cost effective deployment, this software solution is scalable to match your business growth.

Benefits of InfraSuite Device Master

Free to Download

InfraSuite Device Master is free to download with 5 nodes by default for monitoring your devices. Various infrastructure facilities such as power and cooling in a data center can be monitored.

Real-Time Monitoring

Users can gather the latest status of critical facilities in a data center through the system screens of InfraSuite Device Master. InfraSuite Device Master also lets you view all of a site's device information, query history and events at the same time, even for multiple sites in different countries.

Easy to Deploy

The download file is ready on the Delta Software website. InfraSuite Device Master is easy to install on your server or PC, with software designed for quick installation and implementation.

Migration to InfraSuite Manager (DCIM)

If you are not only looking for device monitoring but also a complete DCIM solution, InfraSuite Device Master is the easiest way of migrating to InfraSuite Manager, which is Delta fully featured DCIM software solution.

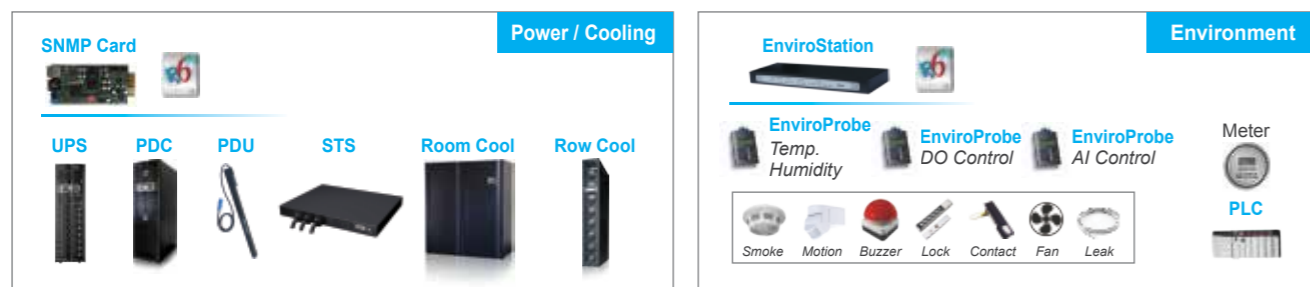
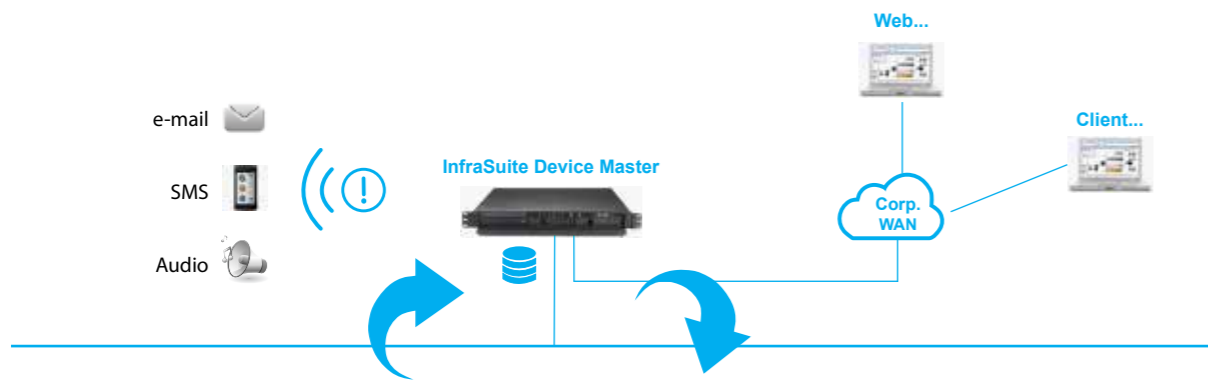


FIGURE 1. Delta InfraSuite Device Master Monitoring Application

Free Download To try the lite version of DCIM (InfraSuite Device Master), please go to:
<http://www.deltapowersolutions.com/en/mcis/data-center-infrasuite-device-master.php>

Product Features

Navigational Graphics

Navigational graphics of the InfraSuite Device Master are customizable. Users can design a floor layout using the provided components.



FIGURE 2. Navigational Graphics

Multiple Protocol Support

InfraSuite Device Master supports multiple device protocols, such as Modbus, SNMP and OPC.

Proactive Notification

Proactive notifications provide automated, personalized email, short messages, and audio to users.

User Account Management

Users can be classified into groups based on privilege levels. The job scope of each privilege level is defined by administrators. The jobs include the level of visible access to layout plans, device control and system operation.

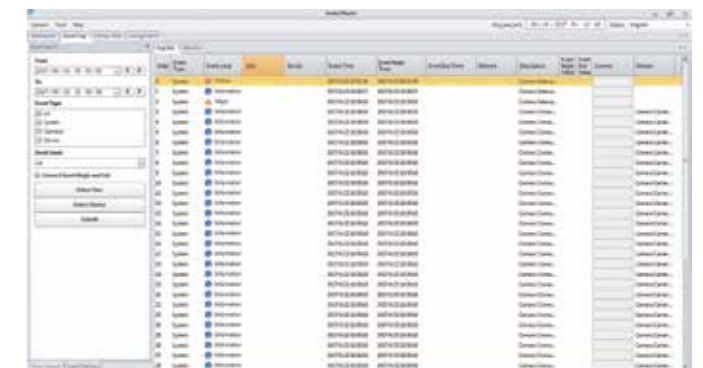


FIGURE 3. Event Log List

Event Management

InfraSuite Device Master has categorized event levels with 16 levels to help users take appropriate action accordingly. Besides, events can be queried by time, type, level and devices. InfraSuite Device Master records the system, operator and device events in its database where the user can review the events' status.

Data Storage and Backup

InfraSuite Device Master stores all history events and data into its database. Users may use this data for analysis. In addition, the database can be backed up automatically base on user preference.

System Requirements

	InfraSuite Device Master (Server)	InfraSuite Device Master (Windows Application UI)	InfraSuite Device Master (Web Monitor UI)
Hardware	CPU: > 2GHz Memory: ≥ 4G Free HD Space: ≥ 50 G	CPU: > 2GHz Memory: ≥ 4G	CPU: > 2GHz Memory: ≥ 4G
Software	Support OS: Windows 7, 8, 10, Windows Server 2008, 2012, 2016	Supported OS: Windows 7, 8, 10, Windows Server 2008, 2012, 2016	Recommended Browser: Microsoft Internet Explorer v11, Google Chrome v30, Mozilla Firefox v23 and Safari v5.

Delta InfraSuite Management System

EnviroStation

Delta's Environmental Management System (EMS) monitors the environment and conditions in the data center, including temperature, humidity, water leakage, alarms for fire, smoke, and unauthorized entry.

The EMS offers IT managers an integrated platform for more convenient monitoring of today's data center.

EnviroStation integrates the monitoring of the data center's environment and other conditions, and sends the data to a central manager via network. User-defined alarms ensure the data center's security.



Easy to manage

- Assess and collect key data center information for enhanced management
- Real-time notification providing faster management response and more effective operations
- Setting manager password for higher security
- SNMP allowing easy integration with any enterprise management system

Convenience

- Monitoring via internet browser
- InfraSuite Manager remote monitoring software providing prompt handling of any data center situation
- Graphical interface and historical data records for more effective management
- Real-time alarm notifications shortening management response time

Flexibility

- Supports SNMP communication protocol
- Setting each alarm value based on actual requirements

Technical Specifications

Model	EMS2000	
Input	Power	100~240 Vac, 50/60 Hz
	Digital Input	Wet Contact Signal • Alarm Voltage 5~24 Vdc, 1-9 mA Dry Contact Signal • Normal: Off (open circuit) • Alarm: On (short circuit)
	Analog Input	Voltage: 0~10Vdc Current: 4~20 mA
	RTD	Range: 0~50°C Accuracy: ± 1°C with 3-wire PT100
Resistance Temperature Detection (x1) Leakage		Support 2-wire or 3-wire resistance
		Detect Voltage < 1V (alarm signal with S-1FP leak sensor)
Output	Sensor HUB	For connection with sensor devices (such as smoke detectors, fire detectors, or door sensors, etc) and support: + 12V, 0.8A (max) + 24V, 1.0A (max) One port limit 0.6A
	Delta Bus Relay Output	+ 12V, 0.8A (max) 26 Vdc (max), 0.8A (max)
Alert	Warning Light (X1)	Included in the package and can connect to EMS2000 via a Sensor Hub converter (through Port 1 or Port 2) to alert for abnormal conditions.
Network Connection	RJ45 (X1)	10/100 Base-T
	RS485 (X2)	Standard ModBus
	Console (X1)	Connect to PC via RJ-45 to DB9 cable (cable is included in the package) A configuration port is available for the console mode.
Environment	Operating Temperature	0 ~ 45°C
	Storage Temperature	-20 ~ 60°C
	Operating Humidity	0~ 90% RH (non-condensing)
Dimensions	Product (W x D x H)	440 x 157 x 44 mm
	Package (W x D x H)	510 x 410 x 150 mm
Weight	Product	2.4 kg
	Package	5 kg

These specifications are subject to change without notice.

One Tool. Complexity Mastered.

Delta InfraSuite Manager. Integrated Efficiency.



InfraSuite Manager - Data Center Infrastructure Management (DCIM)

Have the entire data center at your fingertips!



Delta InfraSuite Management System

EnviroProbe

EnviroProbe monitors temperature, humidity in a single cabinet or area and transmits signals from environment sensor devices in the data center (e.g. door sensors, smoke detectors, fire detectors, water-leakage detectors etc.) to management via network. EnviroProbe also controls its connected devices when equipped with digital and analog outputs, keeping the IT manager promptly informed of all environmental changes by giving alarms, controlling the activation and deactivation of an external device (e.g. a magnetic lock), or by giving a sound alert using its own built-in buzzer upon detection of water leakage.

Easy to manage

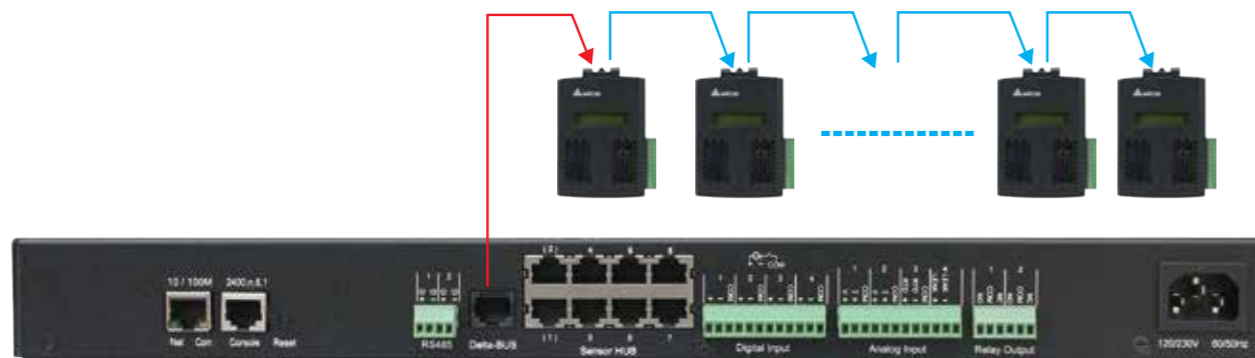
- Monitoring temperature, humidity of the environment
- Backlight LCD display
- Digital/analog inputs and outputs

Convenience

- Work with EnviroStation(EMS2000) to monitor via internet browser
- InfraSuite Manager software for remote monitoring and recording

Flexibility

- Work with EnviroStation(EMS2000) to support SNMP communication protocol



▲ Connecting EnviroProbes with EnviroStation can expand the scope of the monitored area.

Technical Specifications

Model	EMS1000	EMS1100	EMS1200
Input Voltage	EMS2000 Delta-BUS or SNMP Card: 12 Vdc (pin 1 & 4) PDU SNMP card: 5 Vdc (Pin 2 & 4)		
Purpose	To collect data from connected devices (temperature & humidity)	To control connected devices	To collect data from and control connected devices
Input/Output Contacts	4 dry/wet contact inputs	4 digital outputs	2 analog inputs, 1 analog output, 1 water-leakage detection (built-in buzzer)
	Connect to EnviroStation (EMS2000) or SNMP IPv6 card		Connect to EnviroStation (EMS2000)
Input	Wet Contacts: 5~24Vdc, 1~8mA; Dry Contacts: Open/Short Status	N/A	Voltage: 0~10Vdc (12bit) Current: 0~20mA (12bit)
Output	N/A	Contact voltage/Contact current/Contact tolerance 60Vdc/1A/60W; 30Vac/2.08A/62.5VA	Voltage: 0~10Vdc (12bit) Current: 4~20mA (12bit)
Cascade number to EMS2000	Up to 16 units	Up to 4 units	Up to 5 units
Dimensions (WxDxH)	Product: 66 x 33 x 103 mm Package: 91 x 42 x 133 mm		
Weight	Net Weight: 120g Gross Weight: 140g	130g 150g	
Environment	Temperature	Operation: 0 ~ 60°C	
		Storage: -30 ~ 80°C	Storage: 0 ~ 60°C
		Accuracy: ± 0.4°C & 0 ~ 60°C	N/A
Humidity	Operation: 0 ~ 90% RH (no condensation)		
	Storage: 0 ~ 100% RH (no condensation)		
	Accuracy: ± 3°C & 0 ~ 80°C	N/A	
Altitude	0 ~ 10,000 feet		
Conformance	CE		
	EN55022 (CISPR 22) Class B		
	EN55024 (Level 3 @Air 8 KV/contact 4 KV)		

These specifications are subject to change without notice.

Europe

Czech Republic

Delta Energy Systems
(Czech Republic), spol.s r.o.
Perucka 2482/7, 120 00 Praha 2,
Czech Republic
T +420 272 019 330
E ups.czech.republic@deltaww.com

Finland

Delta Solutions (Finland) Oy
P.O. Box 63, Juvan teollisuuskatu 15, FIN-
02921 Espoo, Finland
T +358 9 84966 0
E ups.finland@deltaww.com

France

Delta Electronics (France) S.A.
ZI du bois Chaland 2, 15 rue des Pyrénées,
Lisses, 91056 Evry Cedex, France
T +33 1 69 77 82 60
E ups.france@deltaww.com

Germany

Delta Energy Systems (Germany) GmbH
Coesterweg 45, 59494 Soest, Germany
T +49 2921 987 0
E ups.germany@deltaww.com

The Netherlands - EMEA Headquarters

Delta Electronics (Netherlands) BV
Zandsteen 15, 2132MZ Hoofddorp,
The Netherlands
T +31 (0) 20 800 39 00
E ups.netherlands@deltaww.com

Poland

Delta Electronics (Poland) Sp. z.o.o.
23 Poleczki Str., 02-822 Warszawa,
Poland
T +48 22 335 26 00
E ups.poland@deltaww.com

Russia

Delta Energy Systems LLC
Vereyskaya Plaza II, office 112, Vereyskaya
str.17, 121357 Moscow, Russia
T +7 495 644 3240
E ups.russia@deltaww.com

Slovak Republic

Delta Electronics (Slovakia) s.r.o.
Botanicka 25/A, SK - 841 04 Bratislava,
Slovakia
T +421 2 6541 1258
E ups.slovakia@deltaww.com

Switzerland

Delta Electronics (Switzerland) AG
Freiburgstrasse 251, 3018 Bern-Bümpliz,
Switzerland
T +41 31 998 53 11
E ups.switzerland@deltaww.com

Spain

Delta Electronics Solutions (Spain) SLU.
Ctra. de Villaverde a Vallecas, 265 1º Dcha Ed.
Hormigueras, 28031 - Madrid, Spain
T +34 91223 7420
E ups.spain@deltaww.com

Turkey

Delta Greentech Electronic San. Ltd.
Serifali Mevkii Barbaros Bulvari Soylesi Sok No
19 Y.Dudullu-Umraniye/Istanbul, Turkey
T +90 216 499 9910
E ups.turkey@deltaww.com

United Kingdom

Delta Electronics Europe Ltd.
1 Redwood Court, Peel Park, Campus, East
Kilbride, G74 5PF, United Kingdom
T +44 1355 588 888
E ups.united.kingdom@deltaww.com

Middle-East & Africa

South Africa

Delta Energy Systems MEA (Switzerland) AG
South Africa Representative Office
Unit 305B, Lougardia Building, Cnr
Embankment and Hendrik Verwoerd Drive,
Centurion, 0157, South Africa
T +27 12 663 2714
E ups.south.africa@deltaww.com

United Arab Emirates

Delta Energy Systems (Switzerland) AG
Dubai Representative Office
P.O. Box 185668
Gate 7, 3rd Floor, Hamarain Centre, Dubai
T +971 425 99 55 3
E info.middle-east@deltaww.com

Americas

Brazil

Delta Greentech (Brasil) S/A
Rua Itapeva, Nº 26 - 3º andar
01332 000 - São Paulo - SP
T +55 11 3530 8658
E ups.brazil@deltaww.com

The United States

Delta Electronics (Americas) Ltd.
46101 Fremont Blvd.
Fremont, CA 94538
T +1 510 344 2157
E ups.na@deltaww.com

Asia Pacific

Australia

Delta Energy Systems Australia Pty Ltd.
Unit 20-21, 45 Normanby Road, Notting
Hill VIC 3168, Australia
T +61 3 9543 3720
E ups.australia@deltaww.com

Sydney office:
B46/24-32 Lexington Drive, Bella Vista NSW
2153, Australia

China

Delta GreenTech (China) Co., Ltd.
238 Minxia Road, Pudong, Shanghai, 201209
P.R.C
T +86 21 5863 5678 / +86 21 5863 9595
E ups.china@deltaww.com

India

Delta Power Solutions (India) Pvt. Ltd.
Plot No. 43, Sector-35, HSIIIDC,
Gurgaon-122001, Haryana, India
T +91 124 4874 900
E ups.india@deltaww.com

Indonesia

Wisma Aldiron 1st Floor, Suite 140, Jl. Jend.
Gatot Subroto Kav. 72, Jakarta 12780,
Indonesia
E ups.indonesia@deltaww.com

South Korea

Delta Electronics (Korea), Inc.
1511, Byucksan Digital Valley 6-cha,
Gasandong,
Geumcheon-gu, Seoul, Korea 153-704
T +82 2 515 5303
E ups.south.korea@deltaww.com

Malaysia

C-05-08, LEVEL 05, BLOCK C, SKYPARK
One City, Jalan USJ 25/1
47650 Subang Jaya
Selangor Darul Ehsan, Malaysia
E ups.malaysia@deltaww.com

Philippines

Unit 1001 Richmond Plaza, San Miguel Ave.,
Ortigas Centre, Pasig City, Philippines
E ups.philippines@deltaww.com
Singapore

Singapore

Delta Energy Systems (Singapore) Pte Ltd.
4 Kaki Bukit Ave 1, #05-04, Singapore
417939
T +65 6747 5155
E ups.singapore@deltaww.com

Taiwan

Delta Electronics Inc.
39 Section 2, Huandong Road,
Shanhua Township
Tainan County 74144, Taiwan
T +886 6 505 6565
E ups.taiwan@deltaww.com

Thailand

Delta Electronics (Thailand) Public Co., Ltd.
909 Soi 9, Moo 4, E.P.Z., Bangpoo
Industrial Estate, Tambon Prakarn,
Amphur Muang-samutprakarn,
Samutprakarn Province 10280, Thailand
T +662 709-2800
E ups.thailand@deltaww.com

Vietnam

3rd floor, RIC Building, 51 Hoang Viet, Tan
Binh, Ho Chi Minh City Vietnam
E ups.vietnam@deltaww.com