

## Lesson 2

# The Importance of Electrical Energy



# How did we live before electricity?

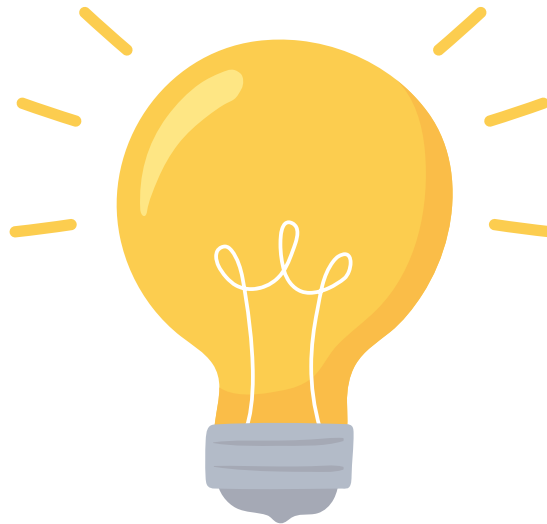
## Nightlife

In the past .....➔ Present .....➔ Future

Light a candle



Light bulb



LED bulbs



# How did we live before electricity?

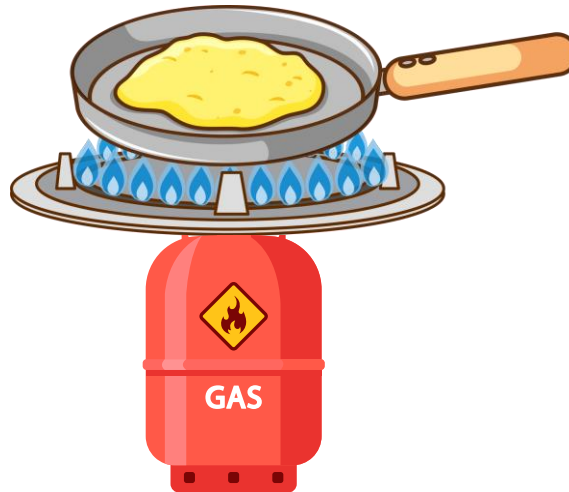
## Cooking

In the past .....➔ Present .....➔ Future

Firewood, Charcoal



Gas stove



Oven, Electric pan



# How did we live before electricity?

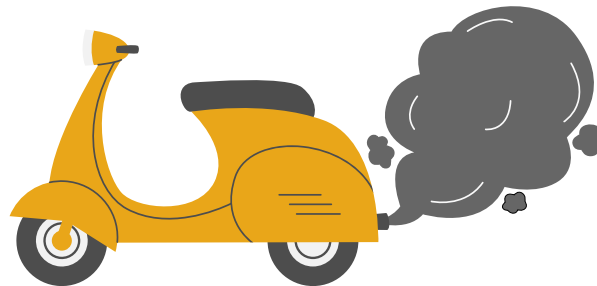
## Vehicle

In the past .....> Present .....> Future

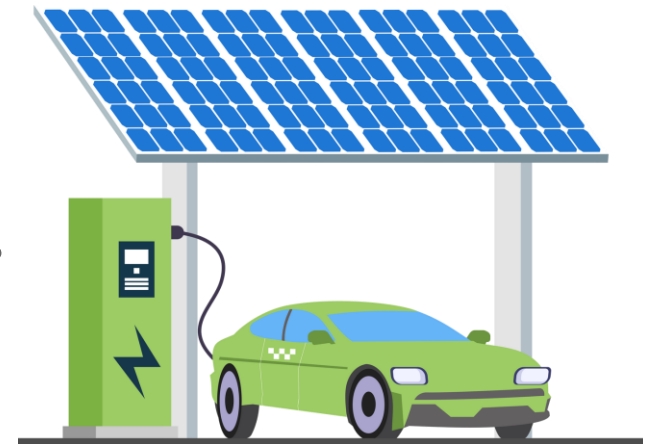
Horse-drawn carriage



Gasoline engine vehicles



Electric cars



# How did we live before electricity?

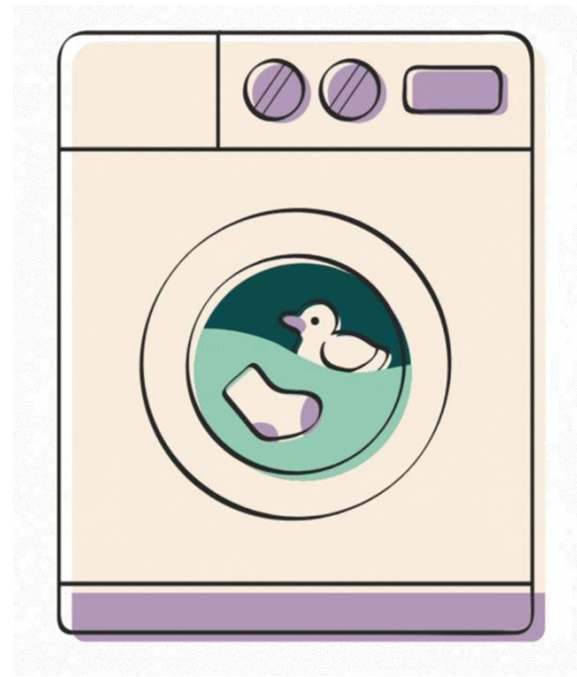
## Washing Clothes

In the past .....➔ Present .....➔ Future

Washing clothes  
by hand



Washing clothes with  
a washing machine



# Electricity is essential to our lives.

Let students identify as many electrical appliances as they can use in their daily lives.





# Where does electrical energy come from?



# Do you remember where electricity is generated?

## Renewable energy power plants



Solar cells



Wind turbine

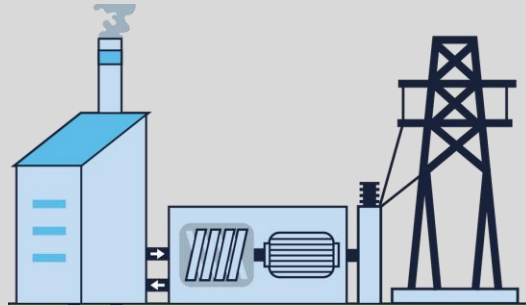


Dam

## Fossil fuel power plants



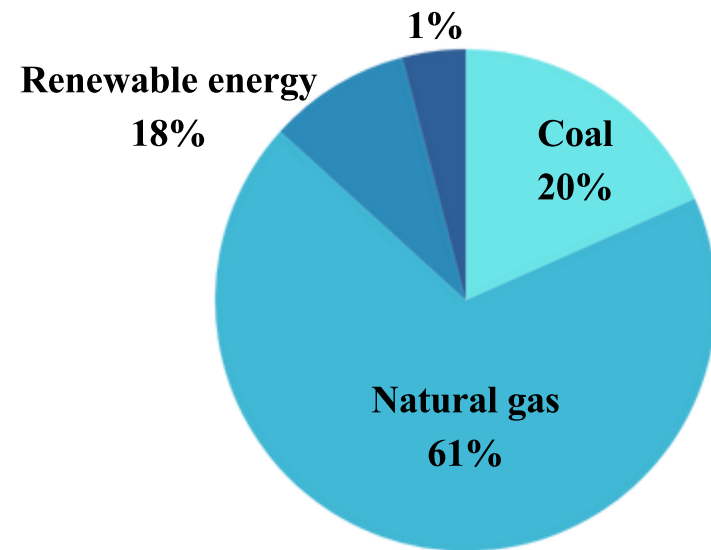
Coal-fired power plants



Natural gas power plants

## Energy sources for electricity generation in Thailand

Buying electricity from abroad



## Disadvantages

- Limited, likely to run out in the future
- Emits huge amounts of pollution



# Renewable Energy Power Plants

It is a clean energy source from nature and does not emit pollution.



# Fossil Fuel Power Plants

Fossil fuel power plants are a limited energy source and emit huge amounts of pollution during production.





# How can we help save energy?

Let students choose the best way to save energy.



Clean refrigerator



Refrigerator



Fridge full of food



# How can we help save energy?

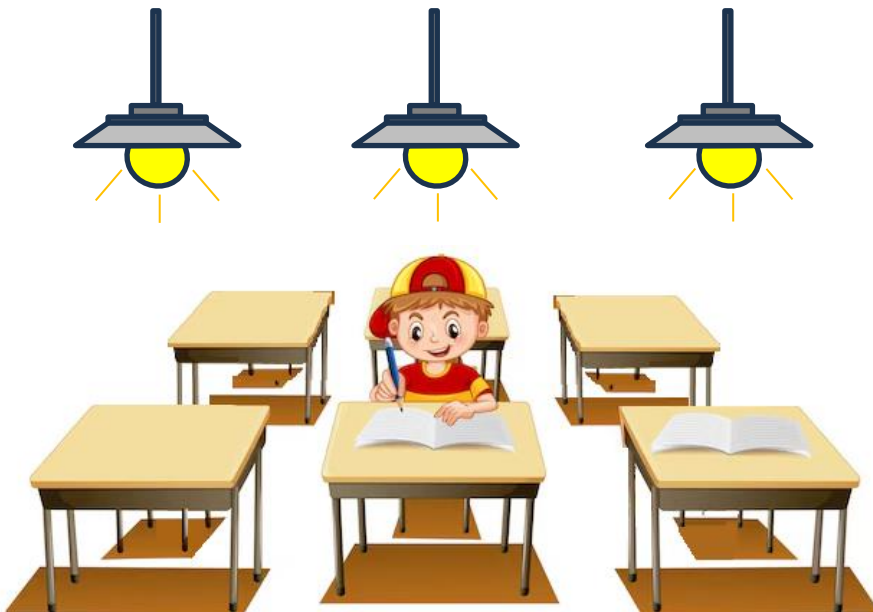
Let students choose the best way to save energy.



Turning on the lights in the classroom



Turn on all the lights



Turn on the lights only when necessary.



# How can we help save energy?

Let students choose the best way to save energy.

## Turn on the air conditioner

Adjust the temperature to  
no more than 25 degrees Celsius.



Adjust the temperature  
below 25 degrees Celsius.



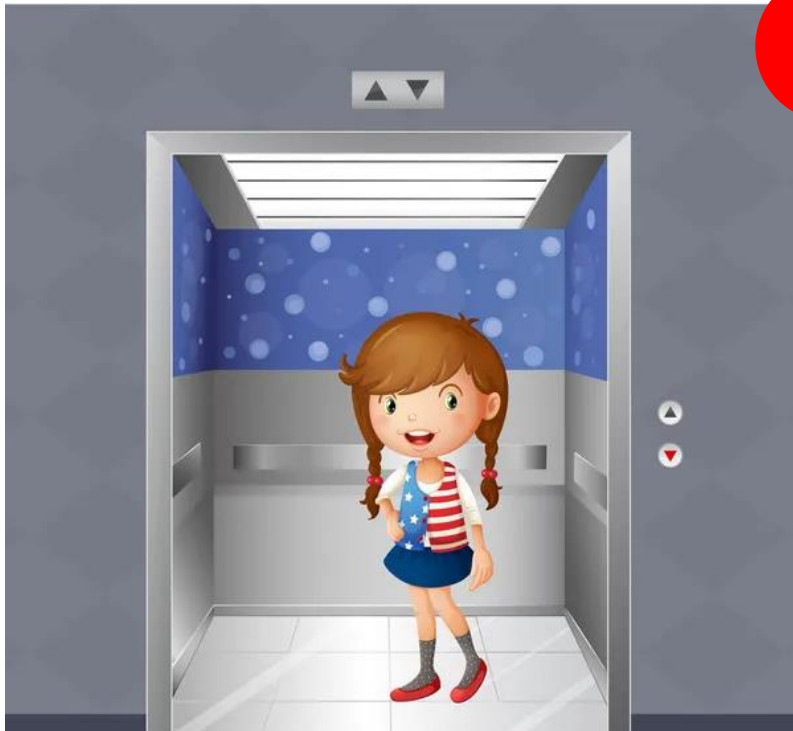


# How can we help save energy?

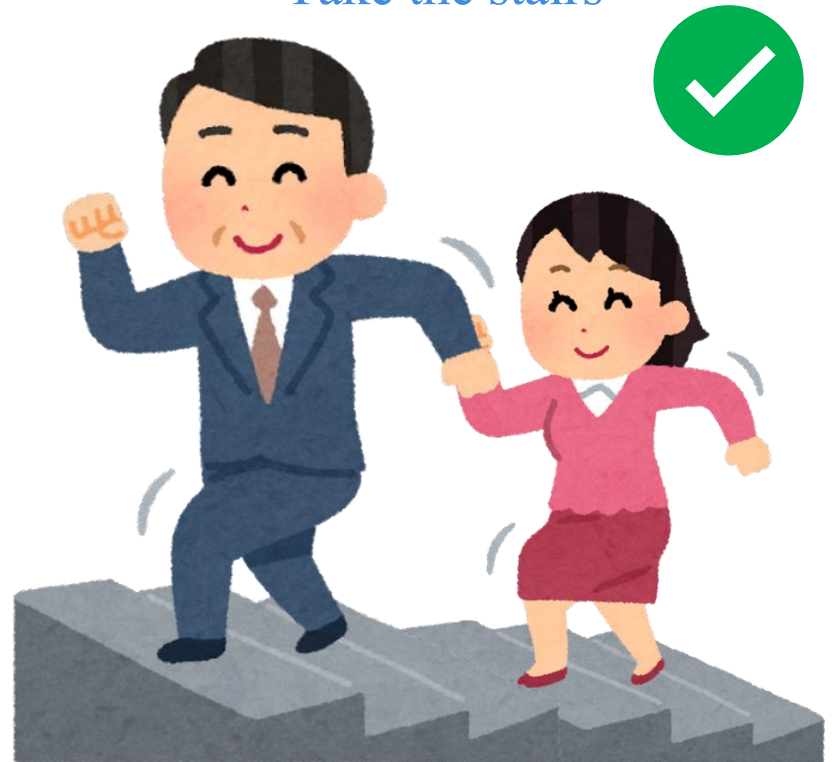
Let students choose the best way to save energy.

When going up or down 1 floor

Take the elevator

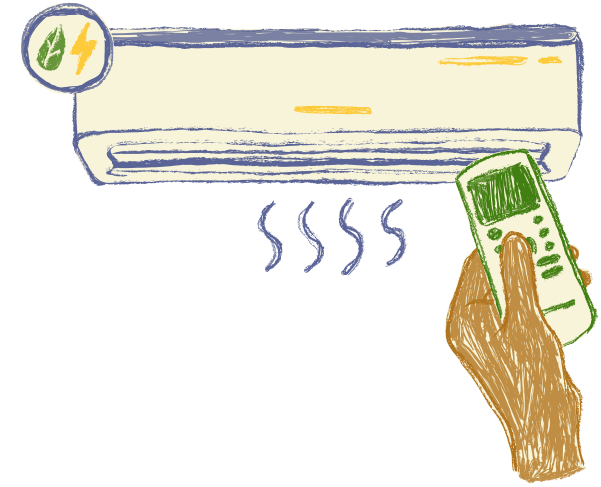


Take the stairs



# How can we help save energy?

Let students choose the best way to save energy.



# The End of Lesson 2



# Interested in joining an activity with Delta?

Contact [teresa.k@deltaww.com](mailto:teresa.k@deltaww.com) Tel: +66 (0)27092800 #6301

[patsongk@deltaww.com](mailto:patsongk@deltaww.com) Tel: +66 (0)27092800 #6936

